

# Mid-Michigan Library League

# Zoom

Into the  
MMLL  
Annual  
Meeting!  
September 17th

## VOTE ABSENTEE

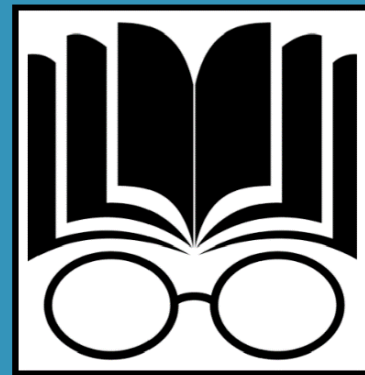
## & STAY SAFE Michigan

Learn more at [Michigan.gov/Vote](https://Michigan.gov/Vote)



# News of Interest

September 2020



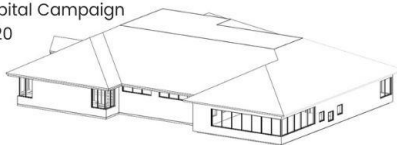
## Member Happenings

- [Seville Township Library](#) has a new director. Welcome **Justine Peterson!** We will miss Emma, and wish her well.
- Also with new/relatively new directors are:
  - ✓ [Luther Area Public Library](#) – Amy Shank
  - ✓ [LeRoy Community Library](#) – Laura Jacobson-Pentces
  - ✓ [Leelanau Township Library](#) – Cora Schaeff
  - ✓ [Bellaire Public Library](#) – Cindi Place
  - ✓ [Morton Township Public Library](#) – Juliane Schafer
- [Glen Lake Community Library](#) is going to re-open September 8<sup>th</sup> in their newly expanded and renovated building!



- [Benzie Shores District Library](#) is breaking ground on their expansion and renovation project, and have raised most of the funds!

Capital Campaign  
2020



- [Surrey Township Library](#) has circulating WiFi hotspots from Kajeet – ten are available for sale – Verizon or At&T \$321.50/year. Contact **Jean Gaskill** 989-588-9782

## Advisory Council

- Your FY20 Advisory Council co-chairs have been Debra Greenacre (Manistee) and Mary Barker (Pentwater). Step up to be the chair for FY21!
- Advisory Council meetings for FY21 are yet to be scheduled.

### OverDrive has acquired RBDigital e-resources

<https://resources.overdrive.com/rbdigital-acquisition-faqs/>

The RBDigital downloadable eAudiobook unlimited/always available collection **will go away at the end of September**. We will have two weeks' notice before they migrate us to the OverDrive platform.

[Consider joining Up North Digital](#) if you have not yet joined. If all MMLL libraries are on the service, we can consider a subsidy for our members to reduce costs if we do not see a reduction in state aid for FY21.

**Transparent Language Online/TLO will continue**, provided by MMLL via the Libby app. The **eMagazine service will not continue** via MMLL **after September**. TLN will take on any MMLL member library desiring to continue eMagazine service, but it is unclear what will happen after their contract expires at the end of April 2021. An email with salient information went out to MMLL directors. Contact [smase@mml.org](mailto:smase@mml.org) if you have questions.



## Annual Meeting

The 2020 MMLL Annual Meeting will take place over **Zoom** due to the ongoing coronavirus pandemic. We are sad to miss out on seeing everyone in person, but we will see you virtually with a great program of speakers and “Zoom Room” breakouts.

**Topic:** MMLL Annual Meeting  
**Time:** Sep 17, 2020 10:00 AM Eastern

**Join Zoom Meeting:**  
<https://us02web.zoom.us/j/83519048312?pwd=NEIzLzVDY3JlT3lMWjdGSUJMc2cxZz09>

**Meeting ID:** 835 1904 8312  
**Passcode:** MMLL

-OR-

By phone, dial (312) 626-6799

**Meeting ID:** 835 1904 8312

**Passcode:** 741544

Don't forget to share this [Trustee handbook](#) with your library Board!



## Scheduled and on-demand WEBINARS and ONLINE CLASSES:



**MLA 2020 Annual Conference, October 28-30, 2020**



This year we are offering four tracks to help you organize your educational experience. Attend sessions in one track, or choose your own adventure by mixing and matching educational programs. [Check out the lineup of education sessions.](#)

The full recording of the coffee hour can be viewed in our [MLA Connect Coffee Hour Archives](#), or watch on Youtube by clicking the video link.



### Library Continuing Education Program

Applications may be submitted quarterly in March, June, September, or December for a continuing education event AFTER the quarterly submission deadline.

[Library of Michigan Continuing Education Page](#)

[Library of Michigan Webinar Archives](#)



## NICHE STAFF SKILLS

LM has produced four new Library Staff Skills courses:

- [Diversity, Equity, and Inclusion in Library Imagery](#)
- [Web Accessibility for Libraries 1: Identify Your Library's Strengths and Weaknesses](#)
- [Web Accessibility for Libraries 2: The Art and Science of Creating Alt Text](#)
- [Web Accessibility for Libraries 3: Linking Practices](#)

## Foundations of Digital Literacy virtual workshops

### Who are these workshops for?

The Foundations of Digital Literacy workshop is designed to help library staff gain confidence in everyday interactions with technology and is intended for participants who would like a basic introduction to digital literacy topics. Because these workshops are funded by the Library of Michigan, they are only open to staff of Michigan libraries.

### What topics will these workshops cover?

Knowledge and skills taught and practiced during the workshop will include:

- A basic understanding of hardware including internal and external components of various devices
- How various types of networks function
- The composition of webpages and websites
- Various browsers and their functionality
- Search engines and tips to perform an effective web search
- Tips on how to evaluate search results
- Cloud computing
- The internet of things
- Information on digital privacy

### Requirements for participation

As this workshop will be presented virtually through Zoom, participants will need to have a basic knowledge of how to log in to a Zoom meeting. Instruction on the basics of using Zoom for a training workshop will be delivered at the beginning of the workshop. This is intended to be an interactive course that involves discussion and hands-on practice, and participants should plan to have a microphone enabled, and if possible, to turn their cameras on for full participation.

### When and where?

Each workshop will run from 9:30am – 2:30pm Eastern with a one-hour break for lunch. This workshop will only be available as live virtual instruction.

[October 6](#)

[October 7 \(filling fast - only 4 spots left!\)](#)

[October 14](#)

[October 15](#)

[October 20](#)

[October 22](#)

### Cost:

Because the Library of Michigan wants to support Michigan library staff in strengthening their digital literacy, registration is highly subsidized and is only **\$15 per person**, and includes all materials.

### Registration

Registration is currently open, and first-come, first served. To register, click a date above or visit the [MCLS Store](#). Questions? Contact Pam at [seabolt@mcls.org](mailto:seabolt@mcls.org).

*This project is made possible in part by the [Institute of Museum and Library Services](#). Additional funding is provided by the [State of Michigan](#).*



[MCLS Training Calendar](#)

### Virtual trainings on leading effective meetings and conversations –

**The Facilitator's Toolbox - Part 1:** *Make your meetings effective, efficient, and fun*  
**The Facilitator's Toolbox - Part 2:** *Practical skills for responding to conflict and coming to agreement.* Visit the [event page](#) to register. *This project is made possible in part by the [Institute of Museum and Library Services](#), with additional funding provided by the [State of Michigan](#).*



**M** UNIVERSITY OF MICHIGAN

### Professional Certificate in Public Library Management -

**Learn how to thrive as a public library manager** - 8 skill-building courses, Self-paced, Progress at your own speed, 8 months, 2 - 3 hours per week, \$352.80 (~~\$392USD~~)



[University of Michigan School of Information Library Webinars](#)



**X** WebJunction®  
The learning place for libraries.

[WebJunction Webinars Archive](#), [course catalog](#)



**techsoup**

FOR LIBRARIES

[TechSoup available courses](#)

[Product Catalog](#)



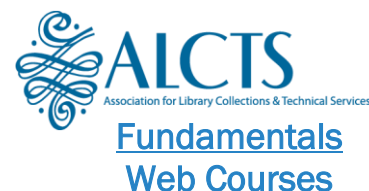
Association of Rural and Small Libraries, ARSL Annual Conference  
Sept 28-Oct 2, 2020.  
Registration and details [HERE](#). \$50 for members, \$65 for non-members.



[Full calendar](#)



[Remote eLearning/Homeschooling Resources for Public Library Staff](#)



[Hotspot Lending Webinar with Sara Tackett, Jackson District Library](#)

DON'T FORGET ABOUT...



**United for Libraries**  
Association of Library Trustees, Advocates, Friends and Foundations  
[www.ala.org/united/michigan](http://www.ala.org/united/michigan)  
Login: michigan  
Password: greatlake1837

Grant Opportunities:

Mini Grants!



Free webinar: [Fundamentals of Library Advocacy](#)

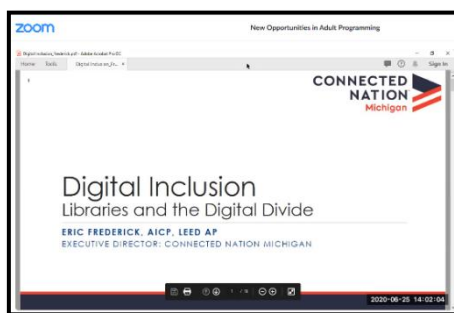


FY20 Library Service Expansion & Mini-Grant Program!

\*\*\*Public libraries are encouraged to reach out to their tech directors to be connected to the MiSEN - the State Education Network.



[E-rate training slides](#)



Eleven libraries were funded in the first round of the mini-grant program and fifteen libraries were funded in the second round, for a total commitment to our members of \$15,000! Look for the FY21 grant programs to be announced this fall.

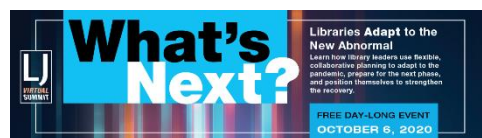
<https://www.mml.org/a/grants>

[www.michigan.gov/erateforlibraries](http://www.michigan.gov/erateforlibraries)



[Get notifications from Grants.gov - click here](#)

[Community Blog](#)  
[Grants Learning Center](#)









Did you know that libraries are eligible to purchase devices such as laptops, desktops, and peripherals, often at prices below market?

The [Awarded Device spreadsheet](#) has been updated and put on Google Drive. Please go there for the most recent version.

All purchases must be made through SPOT (go to [remcsave.org](#) below and follow the instructions)

As many of you probably already suspect, due to anticipated delays on some processors and with COVID-19 thrown into the mix, delivery time tables will be affected. We've asked the vendors to keep the delivery timeframes as up to date as possible in the item descriptions in the catalog. However, we strongly recommend that you contact the vendor directly before placing your order if the timing of the delivery of devices is critical for your situation.

To view the Device Purchasing catalog:

1. Go to [remcsave.org](#).
2. Click on Technology on the home page.
3. Click on the Device Purchasing box.
4. Use the categories on the left under Device Purchasing to navigate through the catalog.
5. Change the number of items per page that you can see by updating the number at the bottom of the list of devices and clicking enter.

To access SPOT to upload a PO, you must have an account and log in. Once you're in SPOT, use the Purchase Order icon at the top to jump down to the Purchase Order section or scroll down to the bottom.

Frequently Asked Questions about the bid and SPOT, such as how to log in and how to make a purchase, can be found in the [Help section on the REMC SAVE website](#)



The REALM recorded webinar from August 4, 2020 can be viewed [HERE](#).



Stacy Pasche, director at [Benzie Shores District Library](#), found these links that may help determine occupancy levels for your buildings:

This is not an area I am familiar with, but I did find these useful:

<https://ccpia.org/occupancy-load-signs/>

The equation to determine occupancy load with the factors in the above site is in this handy worksheet I stumbled across by pure google luck:

<https://www.garlandtx.gov/DocumentCenter/View/7840/Occupancy-Load-table-25-50--for-Reopening?bidId=>



MICHIGAN STATE UNIVERSITY | Extension

Michigan State University Extension offers online financial classes – check them out [HERE](#).  
[Mi Money Health](#)



**STAY SAFE**

## VOTE FROM HOME

**IN THE NOV. 3 ELECTION**

**New voters register from home**

- Recommended: Register by mail/online at [Michigan.gov/Vote](#) by **Oct. 19**.
- If necessary, registration is available by bringing proof of residency to your local clerk's office **up to and on Election Day**.

**Apply from home for a ballot**

- Apply or download an application at [Michigan.gov/Vote](#). Accessible applications are also available. Or you may request an application from your local clerk.
- Recommended: Sign up to automatically receive an application to vote at home in every election.

**Vote from home with an absent voter ballot**

- Ballots must be received by the clerk **by 8 p.m. Election Day**. Return your ballot to a drop box (if your local clerk has one) or in person to your clerk's office. (Call first for locations and hours.)
- Or return your ballot by mail as soon as possible and at least two weeks before Election Day.

Visit [Michigan.gov/Vote](#) for personalized voting information

The White Pine Library Cooperative offers OCLC interloan services via their "Peabody" system. The cost is reasonable, and you can use their services for patrons that cannot find what they need via MeLCat. Here is a link to useful tutorials for their system: [White Pine Library Cooperative > Peabody / OCLC Interlibrary Loan Tutorials](#)



## Mid-Michigan Library League

Tel (231) 775-3037  
Fax (231) 775-1749

201 N. Mitchell Street, Suite 302  
Cadillac, MI 49601

[www.mml.org](#)  
[smase@mml.org](mailto:smase@mml.org)